



# Rac GAP1 Polyclonal Antibody

<b>Catalog No</b>	YP-Ab-16215
<b>Isotype</b>	IgG
<b>Reactivity</b>	Human;Mouse;Rat;Monkey
<b>Applications</b>	WB;IHC;IF;ELISA
<b>Gene Name</b>	RACGAP1
<b>Protein Name</b>	Rac GTPase-activating protein 1
<b>Immunogen</b>	The antiserum was produced against synthesized peptide derived from human GTPase Activating Protein. AA range:353-402
<b>Specificity</b>	Rac GAP1 Polyclonal Antibody detects endogenous levels of Rac GAP1 protein.
<b>Formulation</b>	Liquid in PBS containing 50% glycerol, 0.5% BSA and 0.02% sodium azide.
<b>Source</b>	Polyclonal, Rabbit,IgG
<b>Purification</b>	The antibody was affinity-purified from rabbit antiserum by affinity-chromatography using epitope-specific immunogen.
<b>Dilution</b>	Western Blot: 1/500 - 1/2000. Immunohistochemistry: 1/100 - 1/300. Immunofluorescence: 1/200 - 1/1000. ELISA: 1/40000. Not yet tested in other applications.
<b>Concentration</b>	1 mg/ml
<b>Purity</b>	≥90%
<b>Storage Stability</b>	-20°C/1 year
<b>Synonyms</b>	RACGAP1; KIAA1478; MGCRCAGAP; Rac GTPase-activating protein 1; Male germ cell RacGap; MgcRacGAP; Protein CYK4 homolog; CYK4; HsCYK-4
<b>Observed Band</b>	72kD
<b>Cell Pathway</b>	Nucleus . Cytoplasm. Cytoplasm, cytoskeleton, spindle . Cytoplasmic vesicle, secretory vesicle, acrosome. Cleavage furrow. Midbody, Midbody ring . Cell membrane; Peripheral membrane protein; Cytoplasmic side. Colocalizes with RND2 in Golgi-derived proacrosomal vesicles and the acrosome (By similarity). During interphase, localized to the nucleus and cytoplasm along with microtubules, in anaphase, is redistributed to the central spindle and, in telophase and cytokinesis, to the midbody ring, also called Flemming body. Colocalizes with RHOA at the myosin contractile ring during cytokinesis. Colocalizes with ECT2 to the mitotic spindles during anaphase/metaphase, the cleavage furrow during telophase and at the midbody at the end of cytokinesis. Colocalizes with Cdc42 to spindle microtubules f
<b>Tissue Specificity</b>	Highly expressed in testis, thymus and placenta. Expressed at lower levels in spleen and peripheral blood lymphocytes. In testis, expression is restricted to germ cells with the highest levels of expression found in spermatocytes. Expression is regulated in a cell cycle-dependent manner and peaks during G2/M phase.

**Function**

domain:The coiled coil region is indispensable for localization to the midbody during cytokinesis.,function:Essential for the early stages of embryogenesis and may play a role in the microtubule-dependent steps in cytokinesis. Plays key roles in controlling cell growth and differentiation of hematopoietic cells through mechanisms other than regulating Rac GTPase activity. Also involved in the regulation of growth-related processes in adipocytes and myoblasts. May be involved in regulating spermatogenesis and in the RACGAP1 pathway in neuronal proliferation. Shows strong GAP (GTPase activation) activity towards CDC42 and RAC1 and less towards RHOA. Required for initiation of cleavage furrow ingression by regulating ECT2 and for assembly of the contractile ring. May play a role in regulating cortical activity through RHOA during cytokinesis. May participate in the regulation of sulfate tra

**Background**

This gene encodes a GTPase-activating protein (GAP) that is a component of the central spindle complex. This protein binds activated forms of Rho GTPases and stimulates GTP hydrolysis, which results in negative regulation of Rho-mediated signals. This protein plays a regulatory role in cytokinesis, cell growth, and differentiation. Alternatively spliced transcript variants have been found for this gene. There is a pseudogene for this gene on chromosome 12. [provided by RefSeq, Feb 2016],

**matters needing attention**

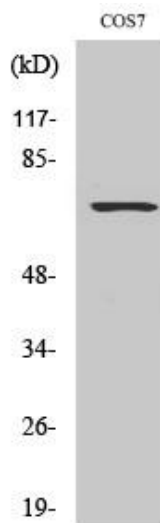
Avoid repeated freezing and thawing!

**Usage suggestions**

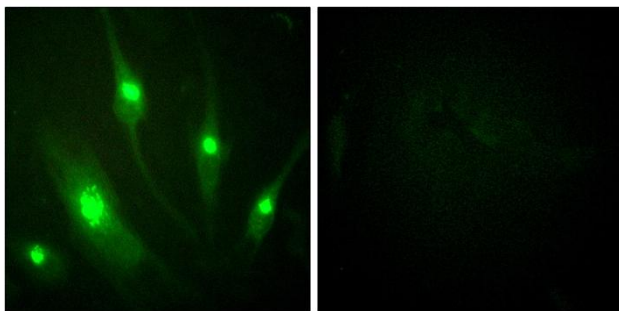
This product can be used in immunological reaction related experiments. For more information, please consult technical personnel.



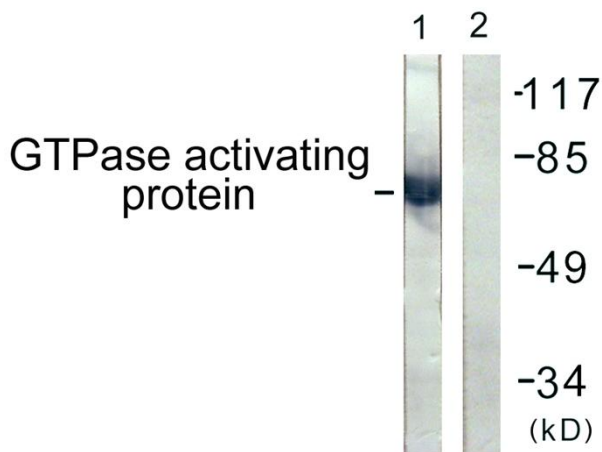
## Products Images



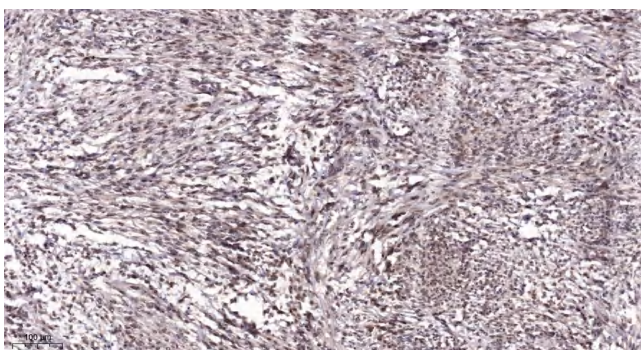
Western Blot analysis of various cells using Rac GAP1 Polyclonal Antibody



Immunofluorescence analysis of HeLa cells, using GTPase Activating Protein Antibody. The picture on the right is blocked with the synthesized peptide.



Western blot analysis of lysates from COS7 cells, using GTPase Activating Protein Antibody. The lane on the right is blocked with the synthesized peptide.



Immunohistochemical analysis of paraffin-embedded human Colon cancer. 1, Antibody was diluted at 1:200(4° overnight). 2, Tris-EDTA, pH9.0 was used for antigen retrieval. 3, Secondary antibody was diluted at 1:200(room temperature, 45min).

